



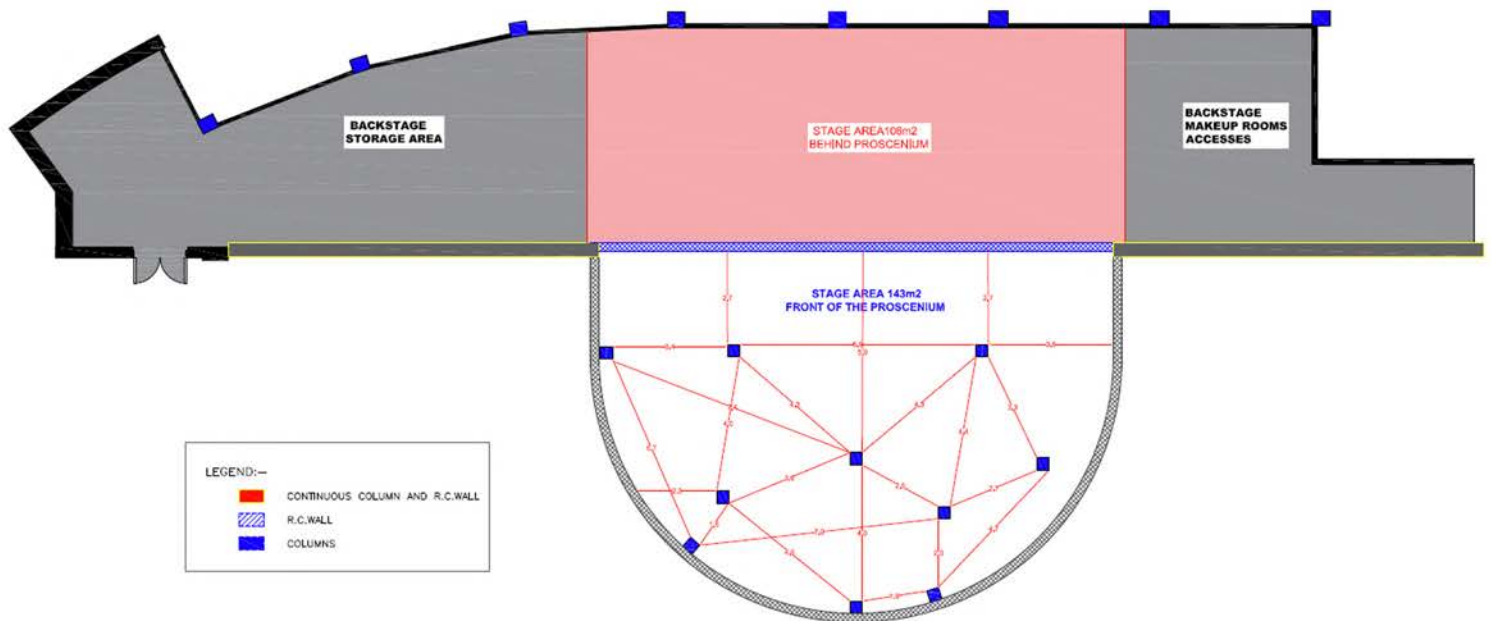
مسرح عبدالعزيز ناصر

Abdul Aziz Nasser Theater

**TECHNICAL
INFORMATION
2025**

STAGE DIMENSIONS

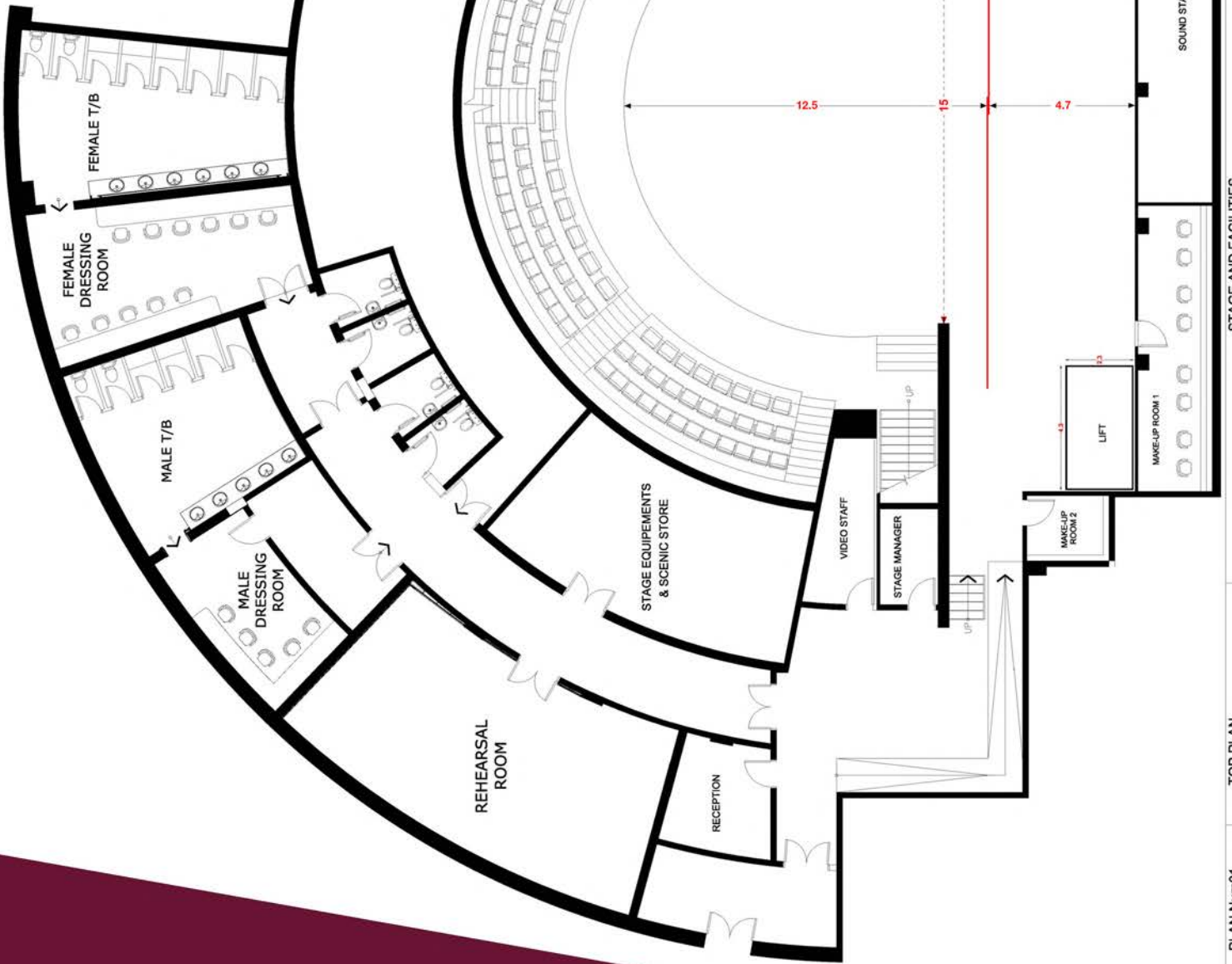
- The stage area: 143 m² (from the proscenium to downstage)
- Stage Height: 0.9 m
- Proscenium: 15 m X 7.7 m
- Stage Depth: 17.5 m
- Proscenium Arch to Upstage Wall: 6.4 m
- Depth from the Red Curtains: 4.7 m
- 1 x Prompt Desk (Stage Right)



Dressing rooms : 4

- 240cm X 720cm On Backstage
- 227cm X 284cm On Backstage
- 360cm X 590cm Male dressing room
- 455cm X 930cm Female dressing room

Rehearsal room : 1 (6.60m x 4.60m)



STAGE AND FACILITIES

TOP PLAN

PLAN Num01

ABDUL AZIZ NASSER THEATRE

STAGE MASKING :

- 8 Black Legs : 3m (wide) x 8m (drop)
- 2 Black Curtains : 7.5m (wide) x 8m (drop)
- 2 Black Borders : 17m (wide) x 1m (drop)
- 2 Black Borders : 19 m (wide) x 2m (drop)

PLATFORMS (Rising of Stage's Floor) :

- Platform's quantity : 6
- Dimensions : 244cm (Length) x 122 cm (Width)
- Height of Legs : 17.5 cm / 37.5 cm / 58 cm

STAGE LIFT (Backstage Area)

- Maximum Load : 3000 Kg
- Dimensions : 440cm (Length) x 240 cm (Width)

FLYBARS (Load)

- Maximum Uniform Load : 400 Kg
- Maximum Point Load : 100 Kg

MOVABLE STAIRS (Stage Access)

- 2 Stairs
- Dimensions : 120 cm (Depth) x 90 cm (Width) x 86.5 cm (Height)

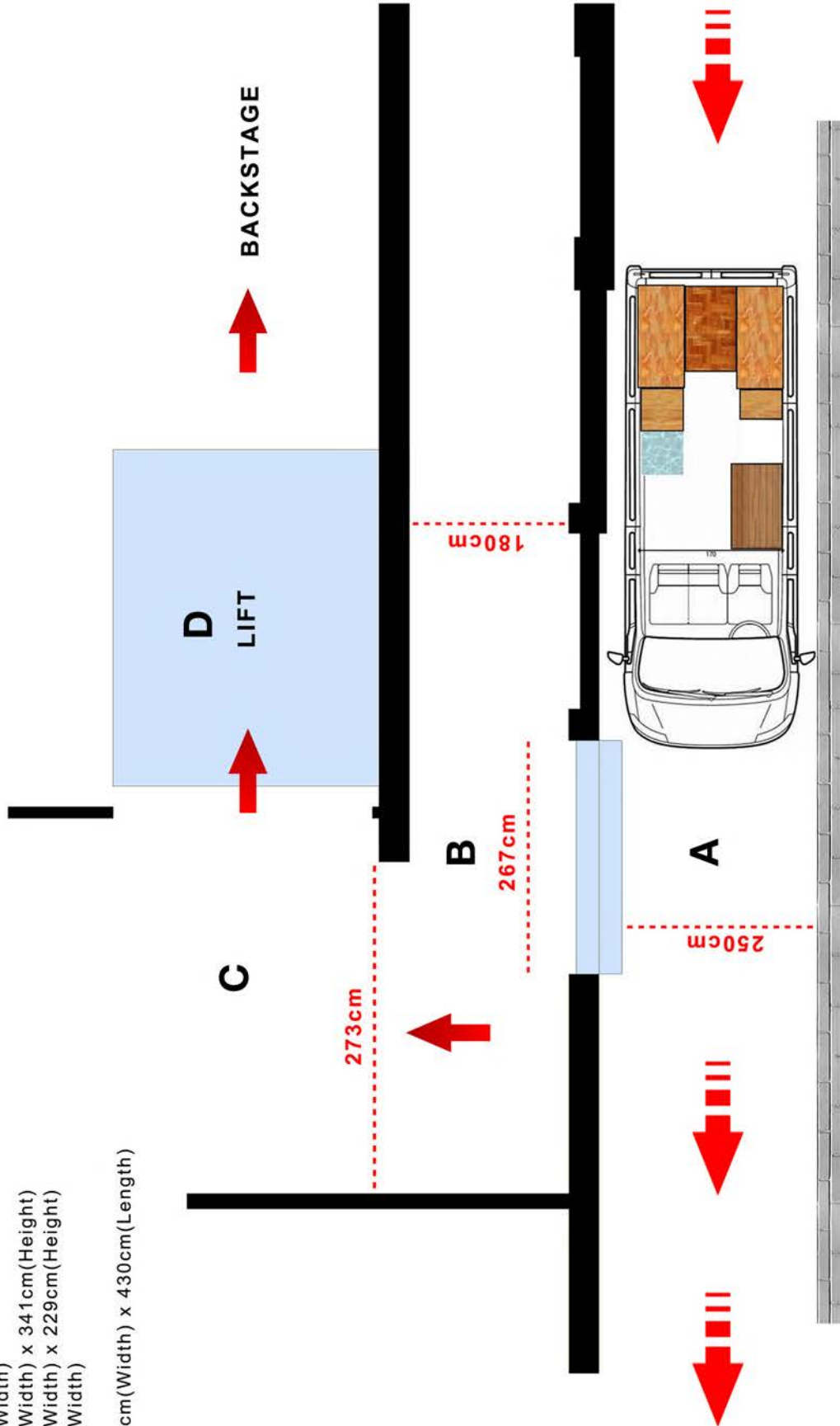
Motorized Fly System: For lighting fixtures only. Not rated for props or scenery.

Fly Tower: The venue has no fly tower. Scenery flying is not possible."

Entrances dimensions

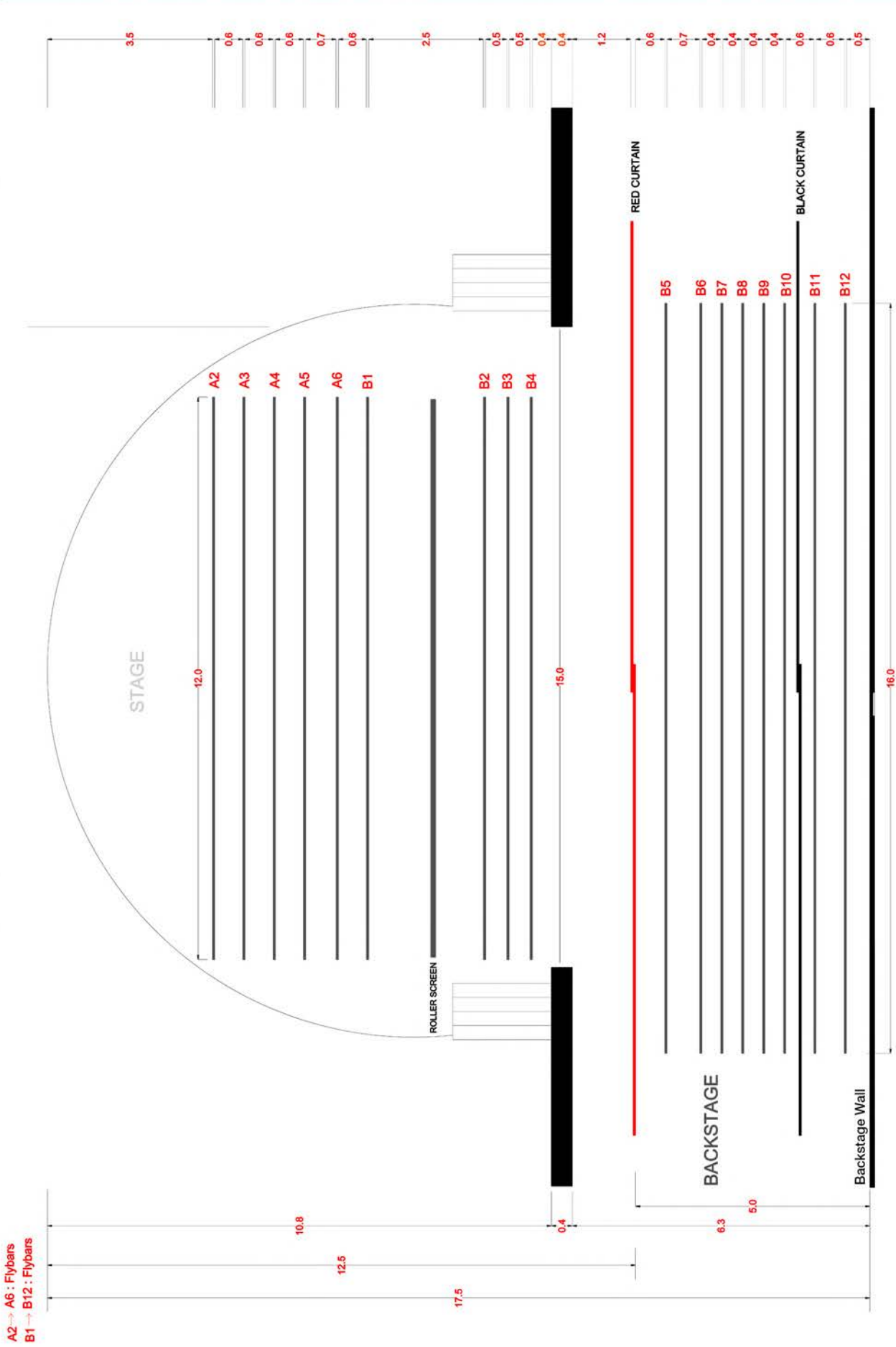
- A** : 250cm(Width)
- B** : 267cm(Width) x 341cm(Height)
- C** : 273cm(Width) x 229cm(Height)
- D** : 234cm(Width)

LIFT : 234cm(Width) x 430cm(Length)

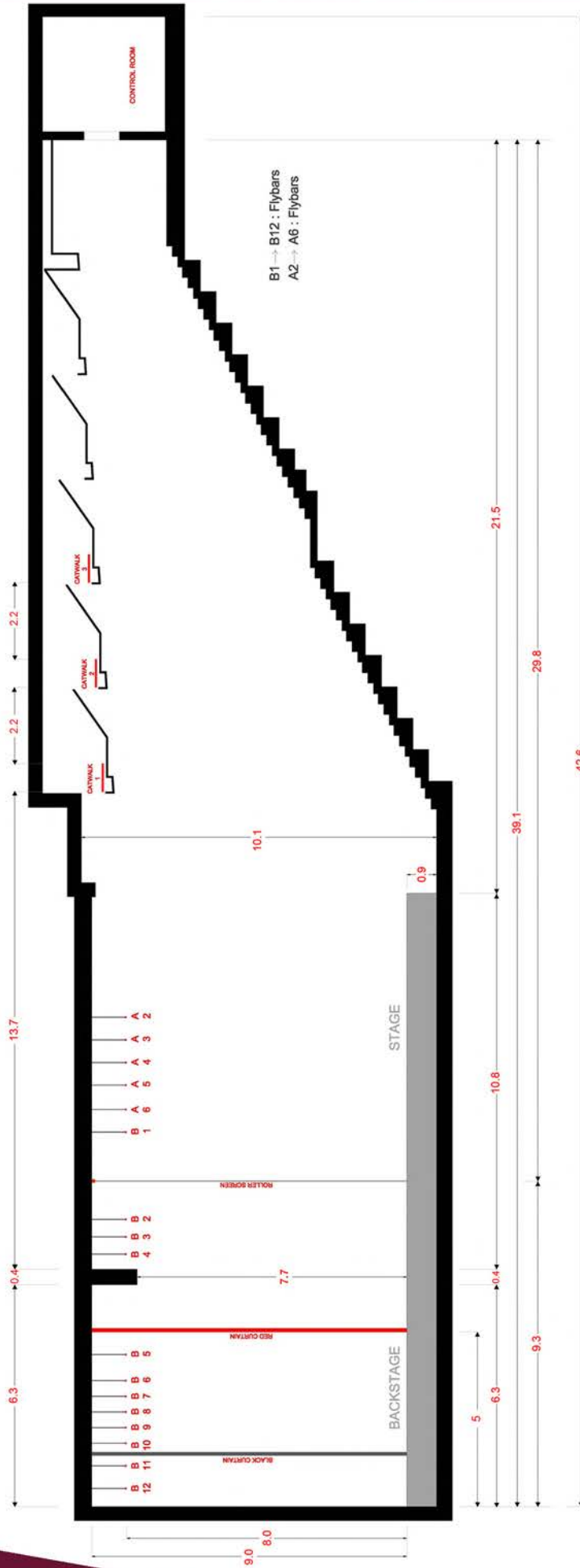


ABDUL AZIZ NASSER THEATRE \ ENTRANCES DIMENSIONS & BACKSTAGE ACCESS

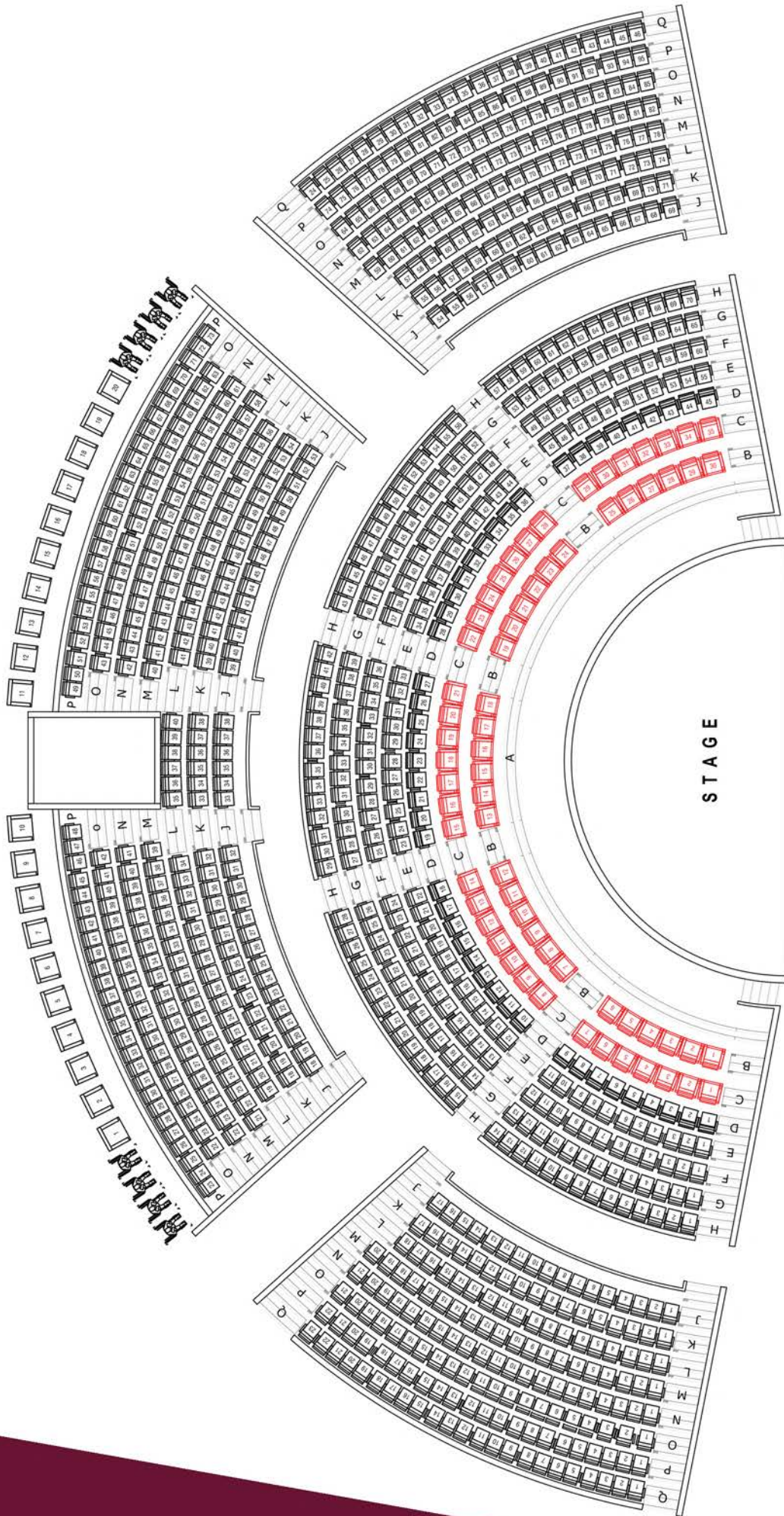
All Flybars motorized up-down , just for Hanging (NO FLY TOWER)



All Flybars motorized up-down , just for Hanging (NO FLY TOWER)



PLAN Num02 ELEVATION SECTION AND DIMENSIONS Unit by Meter (m) ABDUL AZIZ NASSER THEATRE



Capacity

Number of Seats: 980 seats

VIP: 20 seats

VIP: 65 seats

Normal seats: 895 seats

We maintain an inventory of premium lighting fixtures perfect for small to medium events. For large-scale shows, clients are responsible for providing the specific lighting fixtures required for their production.

House:

- A dedicated house lighting system provides seamless, auditorium-wide illumination for audience safety and convenience.
- The house lights are arranged in multiple, independently controllable rows. Each row can be dimmed from 0 to 100% , allowing for control of individual rows or the entire auditorium at once.

Stage lighting Control:

Main Lighting Console :

- **GrandMA2 full-size** : 1 x DMX IN / 6 x DMX OUT
- **NPU (Network Processing Unit)**: 8 x DMX OUT

Backup :

- **MA onPC Command Wing**: 1 x DMX IN / 2 x DMX OUT

Circuit loading :

- 234 x **3KW Dimmers** / (Connector : 16amp, CEE 17)
- 30 x **3KW NON Dim** / (Connector : 16amp, CEE 17)

Lighting Fixtures:

- 10 x **Aurora CYC 4Way** Inc 4 pcs of P2/12
- 40 x **1k Fresnel with Barn Door**
- 24 x **Par 64 with Lamp 60(VNSP)** 1000w.
- 48 x **Par 64 with Lamp 64** (1000w)
- 50 x **Acclaim fresnel 650W**,6-60°,Color Frame (Fresnel)
- 50 x **Acclaim 650W**,4-64°,Color Frame (PC)
- 40 x **Ellipsoidal Fixed Beam 40° Spot** 800w
- 40 x **800W Ellipsoidal zoom spot**- 12°-28° zoom spot (Lamp 650W).

Follow Spot: (on the left and right sides at the back of the auditorium)

- 2 x 200 HTI Follow Spot electronic Ballast with Tripod and color, **DTS Lighting-PHARUS 1200**.

Moving Heads:

- 26 x **Profile led 1000 FLASH Event**

Effects:

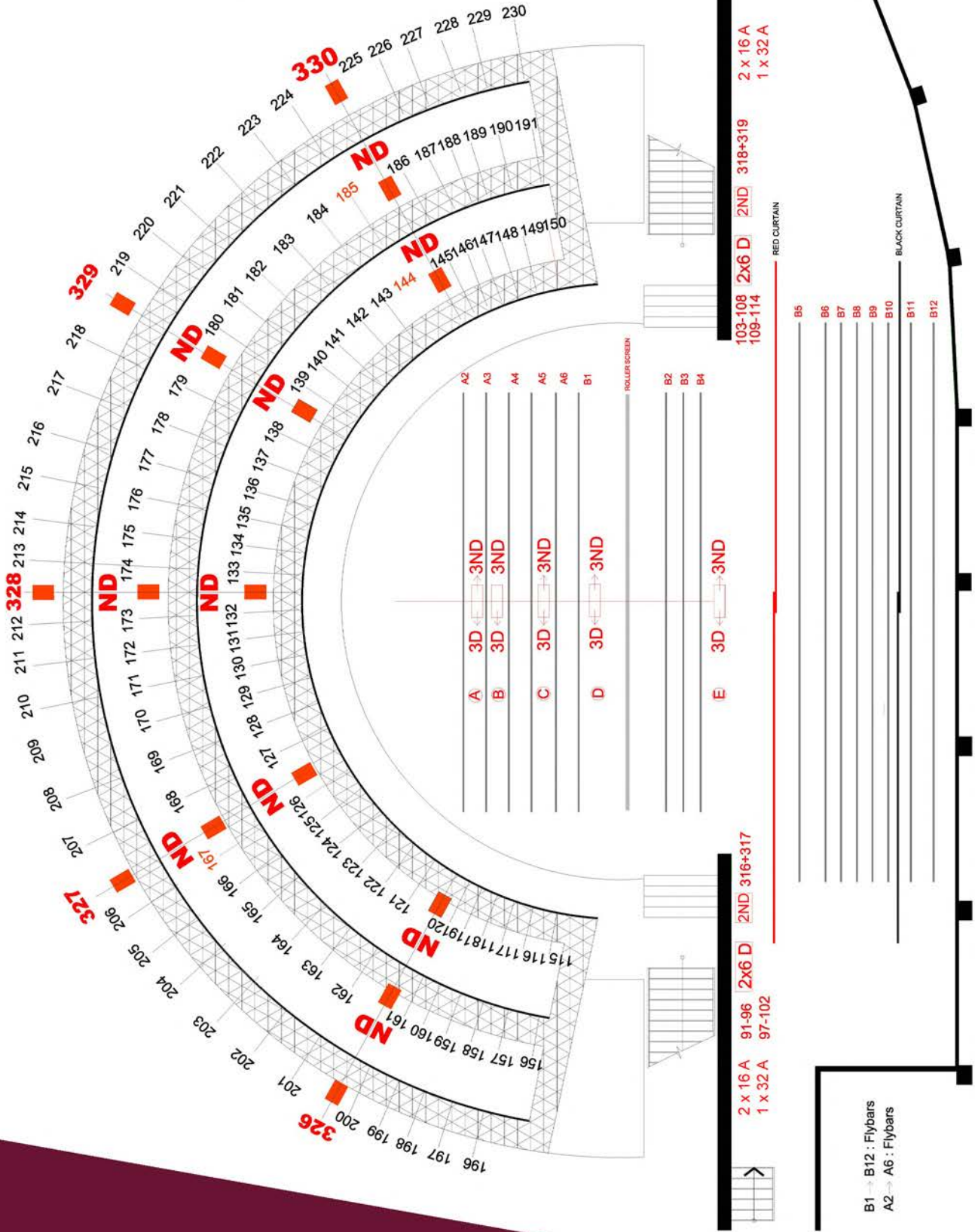
- Strobe Light, **Martin-Atomic 3000 DMX** (2 x 3000w)
- Haze Machine, 2 x **Antari HZ-1000**

Lighting positions FOH:

- Lighting Bridge 1 (40 x Dimmer channel + 5 x NoN Dim) 11.7m from the center of stage.
- Lighting Bridge 2 (39 x Dimmer channel + 5 x NoN Dim) 14m from the center of stage.
- Lighting Bridge 3 (40 x Dimmer channel + 5 x Non Dim) 16.4m from the center of stage.

DIMMERS OUTLET DISTRIBUTION

- ND : non Dimmer
D : Dimmer
- | | | | |
|---------|------|------|---------|
| 1-18 | A 3D | →3ND | 301-303 |
| 19-36 | B 3D | →3ND | 304-306 |
| 37-54 | C 3D | →3ND | 307-309 |
| 55-72 | D 3D | →3ND | 310-312 |
| 73-90 | E 3D | →3ND | 313-315 |
| 91-102 | F 2D | →2ND | 316-317 |
| 103-114 | G 2D | →2ND | 318-319 |
- 4 x 16 A
2 x 32 A



We are committed to enhancing your event with perfectly tailored audio. Our comprehensive AANT portfolio includes:

- **Premium Large-Format Line Arrays**, featuring the renowned L-Acoustics Kiva II, for impeccable coverage, stunning clarity, and powerful impact.
- **Premium Digital Mixing Consoles**, highlighted by our flagship Digico Quantum 338 with over 130 input channels. We offer a full range of console sizes to perfectly match your event's scale, all featuring integrated processing and state-of-the-art effects.
- **Top-Tier Audio Networking** for pristine digital signal transport and real-time system control.
- **Robust System Processing & Control**, powered by solutions like the QSC Q-SYS Core 610, ensuring reliable, scalable, and centralized management of your entire audio environment.

Loudspeaker System:

L Acoustics-KIVA II Solution

- 21 x **L-Acoustics KIVA II**: 2-way passive WST® enclosure: 2 x 6.5" LF + 1.75 HF diaphragm
- 2 x **L-Acoustics LA7.16i CE**: Install-specific amplified controller 16 x 1300 W / 8 Ohms.
- 6 x **L-Acoustics SB15M**: High power compact subwoofer: 1 x 15"
- 4 x **L-Acoustics SB18**: High power compact subwoofer: 1 x 18"
- 2 x **L-Acoustics X8**: 2-way passive coaxial enclosure: 8" L F + 1.5" HF diaphragm
- 8 x **L-Acoustics 5XT**: 2-way passive coaxial enclosure: 5" LF + 1" HF diaphragm

Digital audio processor

- 1 x **L-Acoustics P1 CE**: Digital audio processor and measurement platform: 20 x 18 mic/line AES/EBU and AVB.
- 2 x **L-Acoustics LS10 CE**: 10-port AVB Switch

Back-end control

- 1 x **QSC Systems CORE 610**: Q-SYS network I/O COTS processor
- 1 x **QSC Systems TSC-101-G3**: Q-SYS 10.1" PoE Touch Screen Controller for In-Wall Mounting.

Stage Monitors

- 6 x **L-Acoustics X15**: L-Acoustics X15 HIQ 2-Way Coaxial Speaker w/ Active Crossover
- 4 x **L-Acoustic 112P**
- 8 x **JBL VP7212 MDP**
- 2 x **L-Acoustic SB 15P**
- 3 x **L-Acoustics LA4X CE**: Amplified controller with PFC 4 x 1000 W /8 Ohms

Audio Mixer

Main Mixer:

- 1 x **DiGiCo X-Q338-WS-OP**: DiGiCo Quantum 338 surface - HMA optcs
- 2 x **X-SD-RACK-O**: DiGiCo SD-Rack 192khz (unloaded) with HMA Optcs
 - * DiGiCo MOD-DMI-DANTE2: DiGiCo DMI Dante 64@96 SRC I/O card
 - * DiGiCo MOD-SDR-ADC32B: DiGiCo SD-Rack 32bit 8ch analogue mic & line input card
 - * DiGiCo MOD-SDR-DAC32B: DiGiCo SD-Rack 32bit 8ch analogue line output card
 - * DiGiCo MOD-SDR-AES-IO: SD Rack AES I/O Card
- 1 x **DiGiCo X-SDRM-OP**: DiGiCo SD-MINI Rack 192khz (unloaded) with HMA Optcs
 - * DiGiCo MOD-SDR-ADC32B: DiGiCo SD-Rack 32bit 8ch analogue mic & line input card
 - * DiGiCo MOD-SDR-DAC32B: DiGiCo SD-Rack 32bit 8ch analogue line output card

Backup Mixer

- 1 x **Soundcraft Vi400** control surface

Surround System

Immerse your audience with our reliable 7.1 surround system, featuring Denon processing, JBL speakers, and redundant optical/RCA cabling for crystal-clear, uninterrupted sound.

- 1 x **Denon AVR 330** Surround Processor
- 8 x **JBL 8340A** Surround Speakers

Microphones:

We offer a comprehensive microphone inventory meticulously selected for every application. Our selection includes:

- **Shure**

- 25 x **SM58**
- 29 x **SM57**
- 10 x **TL48B/O-MTQG-A** Lavalier Microphone
- 10 x **TH53T/O-MTQS** Headset Microphone
- 2 x **Beta 58** Handheld Microphone
- 2 x **UR1M** Transmitter
- 10 x **UR1** Transmitter
- 8 x **H6DW6TSL Countryman** Headset Microphone

- **AKG**

- 12 x **C414**
- 2 x **D112**

- **AMT**

- 25 x **System1**
- 6 x **SP 25B**
- 5 x **S 18C**
- 2 x **S 15G**
- 3 x **M40** Piano
- 24 x **97-4C** Percussion

- **Schoeps**

- 2 x **CCM41**
- 2 x **CCM5**

- **DPA**

- 6 x **4099 V**

- **Audio Technical**

- 2 x **U857 QL**

- **Crown**

- 2 x **CM311**

We deliver broadcast-quality video through a complete 12G-SDI workflow. Our theatre's built-in 12G-SDI infrastructure guarantees high-bandwidth signal transport, providing the robust foundation needed for professional quality content and reliable performance for any event.

LED Screen - Processor/ Controller:

- 2 x **TecnoVision TL6** (3.84m x 3.07m)
- 2 x **TecnoVision Processor DLX Pro II**
- 1 x **Novastar VX1000**: all-in-one controller
- 1 x **Novastar CVT-10**: fiber converter

Projector:

- 1 x **Eiki EIP-HDT30**: 8000 Lumens Full HD with Standard Lens
- 1 x **Sony VPL-CW275**: 5100 Lumens – Digital Multi Media Projector

PTZ Camera/Controller

- 3 x **Panasonic AW-UE150WEJ8**: 4K Integrated Camera
- 2 x **Panasonic AK—HC1500G**: Multipurpose Box Camera

Camera Controller

- 1 x **Panasonic AW-RP150G**: Remote Camera Controller

Live Video Production

- 1 x **Panasonic AV-UHS500EJ**: 4K Live Switcher (8 Input SDI)

SDI Router

- 1 x **AJA Kuma1616-12GSDI**: 12 G Router-with Redundant PSU

Video Recorder:

Main recorder:

- 1 x **Blackmagic Design HYPERD/ST/DG4P**: Blackmagic HyperDeck Studio 4K Pro

Backup recorder:

- 1 x **Panasonic AJ-HDP2500**: Panasonic P2HD memory Card Recorder

Video Monitor

- 1 x **Blackmagic SmartView 4K 12G**
- 1 x **Panasonic BT-LH2550**

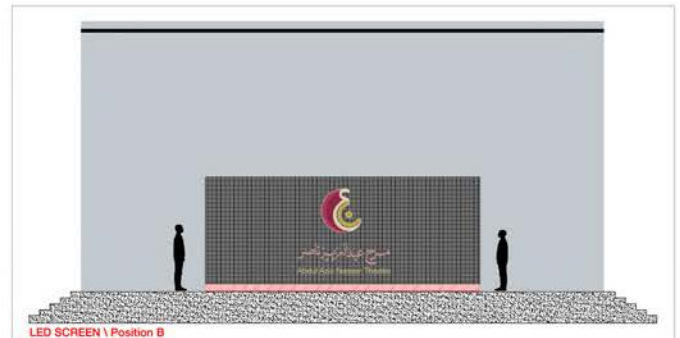
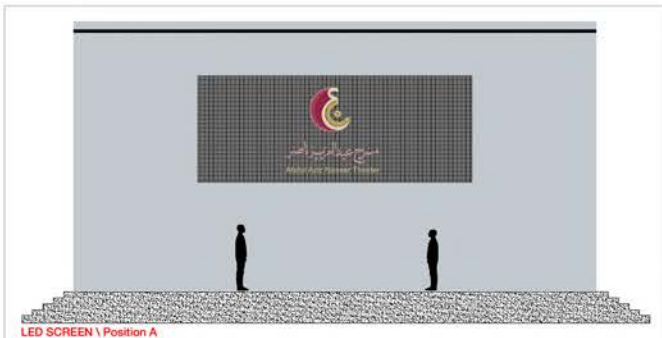
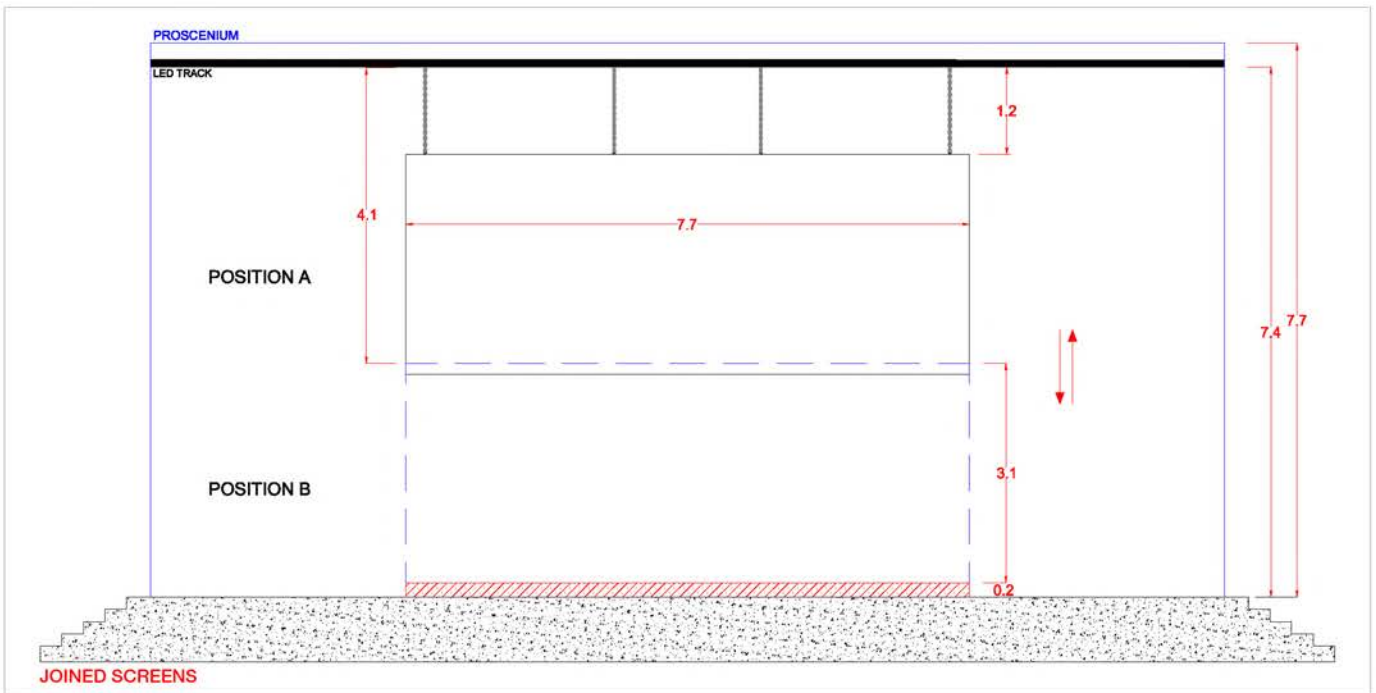
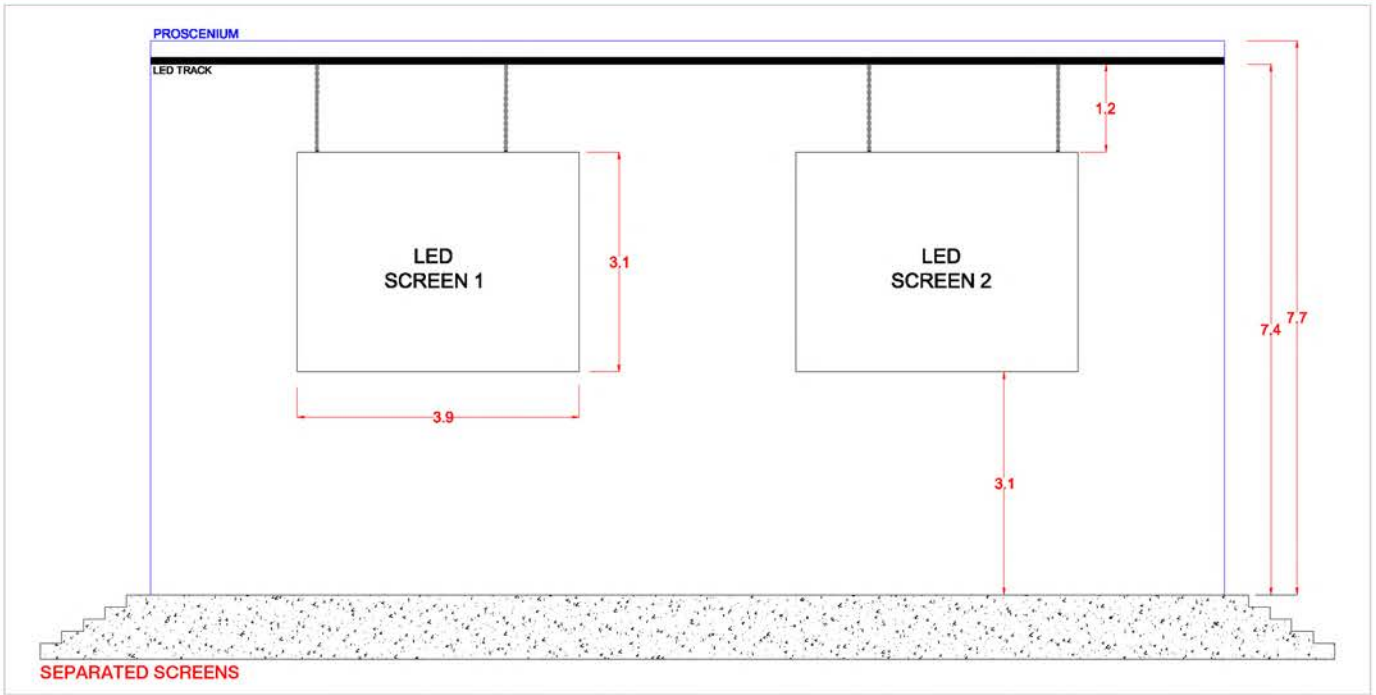
Playback Device

- 1 x **Asus Workstation** (Intel Core Ultra 9 – 3.7 GHz, 64 GB RAM, 16 GB Graphic Card Nvidia GeForce RTX 5080)
BlackMagic DeckLink 4K Extreme 12G
- 1 x **Samsung BD-C550**

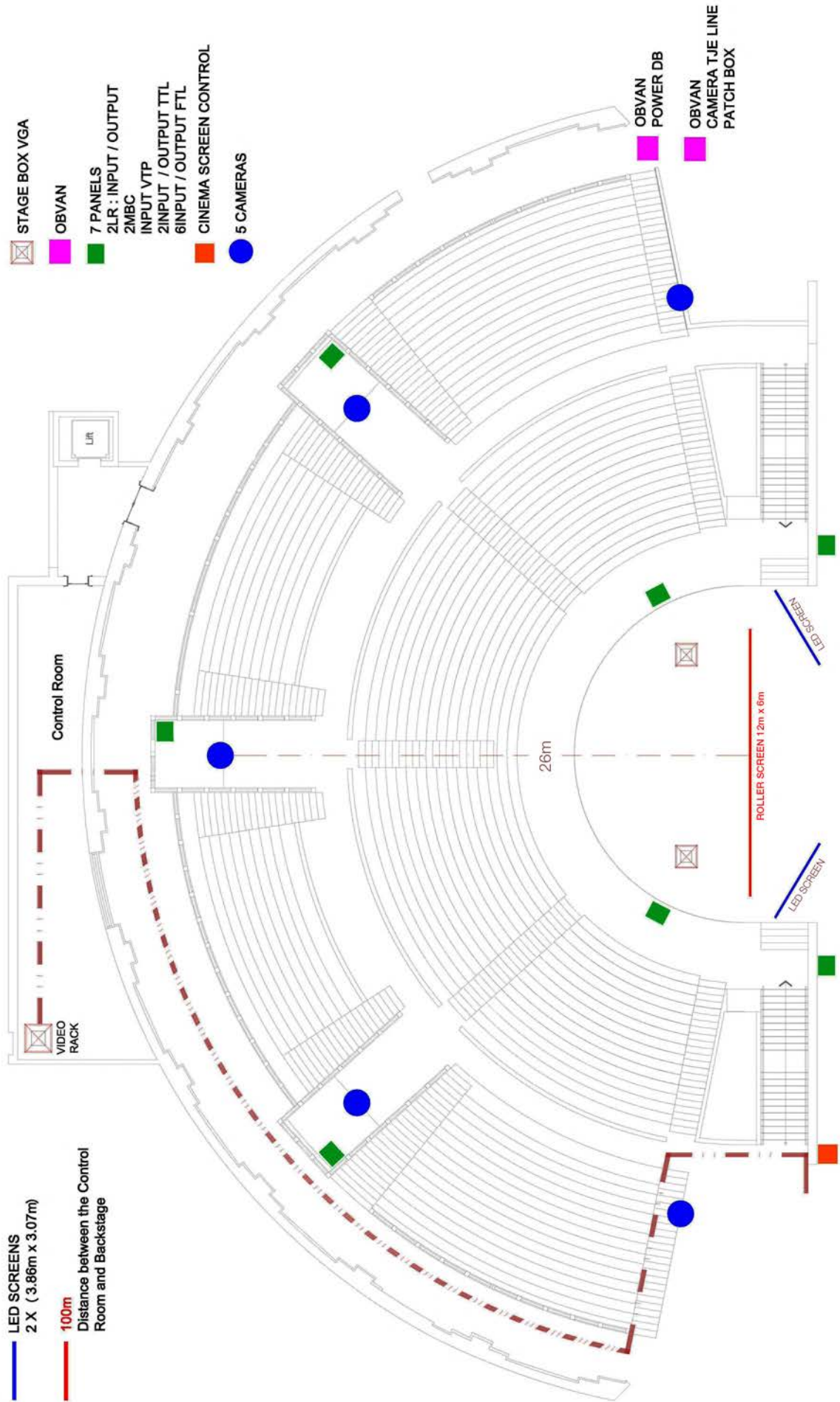
Cross Converter

- 1 x **Blackmagic Design Teranex AV 12G**

LED SCREENS POSITIONS



BROADCAST PANELS LOCALISATIONS



Available Spare Power on stage :

Local Electrical Power Supply:

Voltage : 220 V

415 V

Location : On Stage - Left Side

Mcp - Amps : 63 A

32 A

16 A

VIP Area - Follow Spot

Amps : 16 A

Additional Average Power Consumption :

Amps : 150 A

Dhouha Aouni

Theatre Manager

Tel: +974 44993091

Email: dhouha.alaouni@alrayyan.qa

Iyad Marzouki

Ticketing & Reception In-Charge

Tel: +974 44993095

Email: iyad.almarzouki@alrayyan.qa

Mohamed Ali Bejaoui

Visual Supervisor

Tel: +974 44993093

Email: mohamed.bejaoui@alrayyan.qa

Sabeur Barouni

Video Supervisor

Tel: +974 44993093

Email: sabeur.barouni@alrayyan.qa

Mehdi Medini

Lighting Designer

Tel: +974 44993093

Email: mehdi.medini@alrayyan.qa

Jalal Fichtali

Stage Manager

Tel: +974 44993092

Email: jalal.fichtali@alrayyan.qa

Jamal Kazaber

Sound Technician

Tel: +974 44993093

Email: jamal.kazaber@alrayyan.qa

Adress:

Souq Waqif – Doha – Qatar

Tel: + 974 44993092

Fax: + 974 44361319

P.O. Box 23723